

# Clarke®



**WARNING:** Read these instructions before using the machine

## PROFESSIONAL HIGH PRESSURE HOT WASHER

MODEL NO: KING 250

PART NO: 7320179

## OPERATION & MAINTENANCE INSTRUCTIONS

UK  
CA | CE



ORIGINAL INSTRUCTIONS

GC 11/24

---

## **INTRODUCTION**

---

Thank you for purchasing this CLARKE Pressure Washer.

The machine has been designed to use hot or cold water to clean any surfaces which can stand the force of the high pressure water jet and the action of the detergents used.

Before attempting to use this product, please read this manual thoroughly and follow the instructions carefully. In doing so you will ensure the safety of yourself and that of others around you, and you can look forward to your purchase giving you long and satisfactory service.

The machine must only be used for the purpose for which it was designed.

---

## **GUARANTEE**

---

This product is guaranteed against faulty manufacture for a period of 12 months from the date of purchase. Please keep your receipt which will be required as proof of purchase.

This guarantee is invalid if the product is found to have been abused or tampered with in any way, or not used for the purpose for which it was intended.

Faulty goods should be returned to their place of purchase, no product can be returned to us without prior permission.

This guarantee does not effect your statutory rights.

---

## **ENVIRONMENTAL PROTECTION**

---



Through purchase of this machine, the customer is taking on the obligation to deal with the WEEE in accordance with the WEEE regulations in relation to the treatment, recycling & recovery and environmentally sound disposal of the WEEE.

In effect, this means that this machine must not be discarded with general waste. Refer to the laws governing Waste Electrical and Electronic Equipment (WEEE) at a recognised disposal facility.

---

# GENERAL SAFETY PRECAUTIONS

---



**WARNING: WATER AT HIGH PRESSURE CAN BE DANGEROUS AND CAN CAUSE DAMAGE IF THE OPERATOR IS CARELESS. NEVER ALLOW ANYONE TO OPERATE THIS PRESSURE WASHER UNLESS THEY ARE FAMILIAR WITH THE SAFETY PRECAUTIONS.**

---

1. **NEVER** direct the spray towards any person or animal.
2. **NEVER** direct the spray towards electrical wiring or equipment.
3. **NEVER** hold your finger over the high pressure nozzle.
4. **NEVER** allow children or untrained personnel to use this machine.
5. **NEVER** operate the machine with any of the covers removed.
6. **NEVER** attempt any repairs to this machine. Always refer to your CLARKE dealer.
7. **NEVER** supply any liquid other than water to the water inlet.
8. **NEVER** use the detergent bottle to introduce flammable liquids/solvents, e.g. paint thinners, petrol, oil as there is a risk of explosion.
9. **NEVER** direct the jet at electrical equipment or the machine itself.
10. **NEVER** use the pressure washer if the power cable or important parts of the machine are damaged.
11. **ALWAYS** release any residual pressure in the system by turning off the water supply and operating the trigger before disconnecting any hose or accessory.
12. **ALWAYS** keep the machine itself dry and well clear of water spray.
13. **ALWAYS** wear protective clothing and safety glasses. Loose particles and other debris may be propelled at high speed by the water jet.
14. **ALWAYS** grip the gun firmly and expect the spray gun to 'kick' when starting.
15. **ALWAYS** respect the requirements of the local water company. Pressure washers may only be connected to the mains drinking water supply, if a system separator (known as a backflow preventer) is installed in the supply hose.
16. **ALWAYS** disconnect from the water supply and ensure the system is completely drained when not in use. Store in a cool dry location.
17. **ONLY** use chemical cleaning agents (detergents), that are approved for pressure washers.
18. **WARNING:** High pressure water jets can be dangerous if subject to misuse. The jet must not be directed at a person or anything that they are wearing.
19. **WARNING:** High pressure hoses, fittings and couplings are important for the safety of the machine. Only use those recommended by the manufacturer.
20. **WARNING:** Water that has flowed through a system separator (known as a backflow preventer) is considered non-drinkable.

# ELECTRICAL CONNECTIONS



**WARNING: READ THESE ELECTRICAL SAFETY INSTRUCTIONS THOROUGHLY BEFORE CONNECTING THE PRODUCT TO THE MAINS SUPPLY.**

Before switching the product on, make sure that the voltage of your electricity supply is the same as that indicated on the rating plate. This product is designed to operate on 230VAC 50Hz. Connecting it to any other power source may cause damage.

If the fuse cover becomes lost or damaged, the plug must not be used until a suitable replacement is obtained.

If the plug has to be changed, it should be cut off and a replacement fitted, following the wiring instructions shown below. The old plug must be disposed of safely, as insertion into a mains socket could cause an electrical hazard.



**WARNING: THE WIRES IN THE POWER CABLE OF THIS PRODUCT ARE COLOURED IN ACCORDANCE WITH THE FOLLOWING CODE: BLUE = NEUTRAL BROWN = LIVE YELLOW AND GREEN = EARTH**

If the colours of the wires in the power cable of this product do not correspond with the markings on the terminals of your plug, proceed as follows.

- The blue wire must be connected to the terminal marked **N**.
- The brown wire must be connected to the terminal marked **L**.
- The yellow and green wire must be connected to the terminal marked **E** or  $\perp$ .

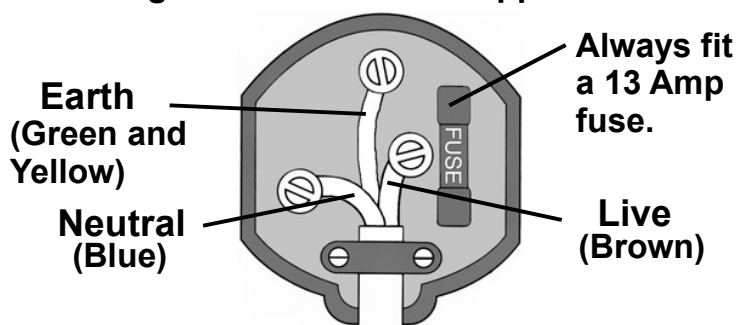
We strongly recommend that this machine is connected to the mains supply via a Residual Current Device (RCD).

## EXTENSION CABLES

When used outdoors, ensure that the extension cable is designed for outdoor use. Ensure that the cable is rated for the voltage and amperage of the machine.

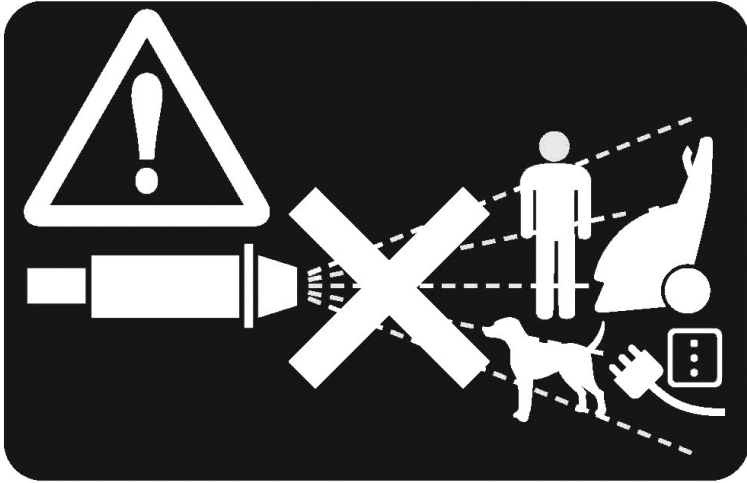







**If in any doubt, consult a qualified electrician. DO NOT attempt any repairs yourself.**

Plug must be BS1363/A approved.

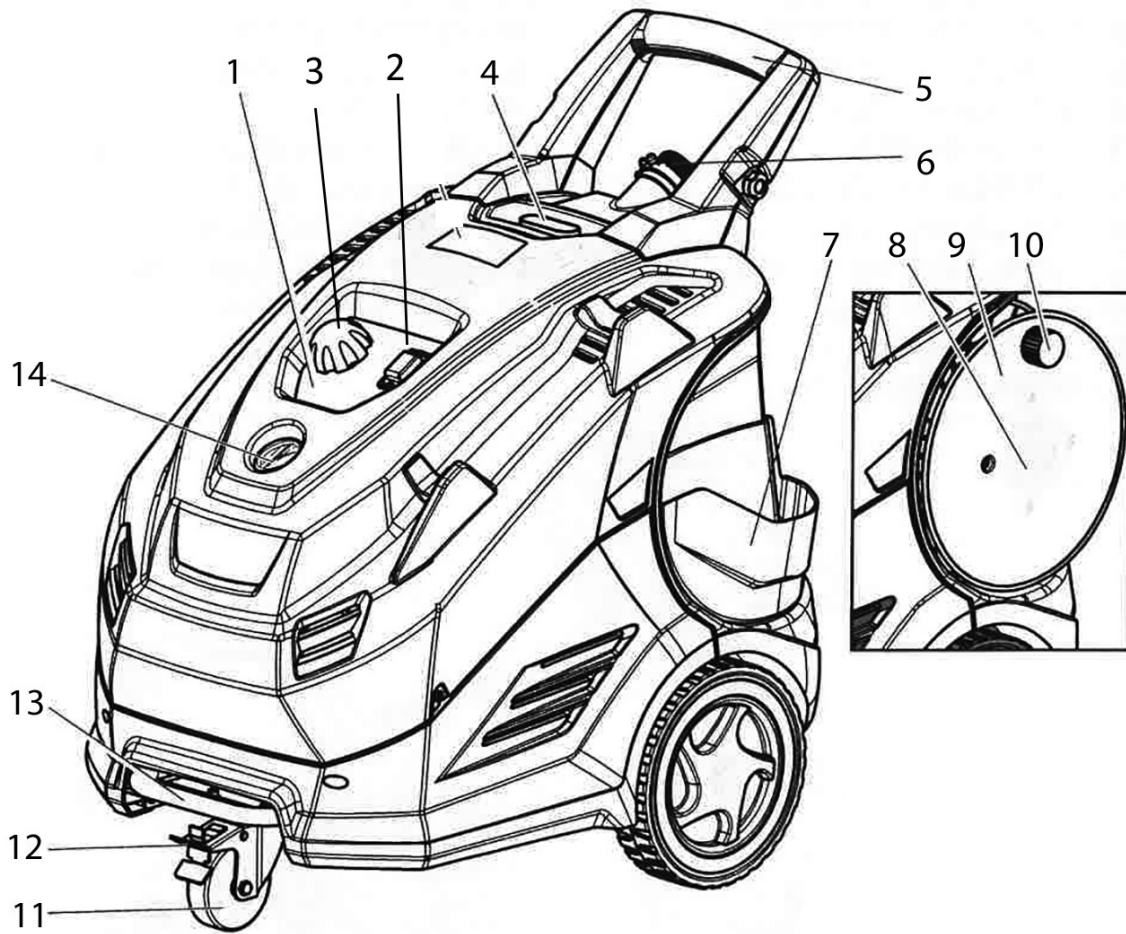


Ensure that the outer sheath of the cable is firmly held by the clamp

# SYMBOLS ON THE MACHINE--TBA

		<p>The high pressure jet must not be directed at persons, animals, live electrical equipment or at the appliance itself.</p>	
	<p>Read the manual before use.</p>		<p>Failing to follow these instructions could result in injury or damage to the machine.</p>
	<p>Conforms to UKCA &amp; CE Regulations.</p>		<p>Wear safety glasses when using this machine.</p>
	<p>Wear ear protection</p>		<p>Respiratory Hazard. Always Wear Protection.</p>
	<p>Hot Surface Do Not Touch</p>		

# OVERVIEW FRONT

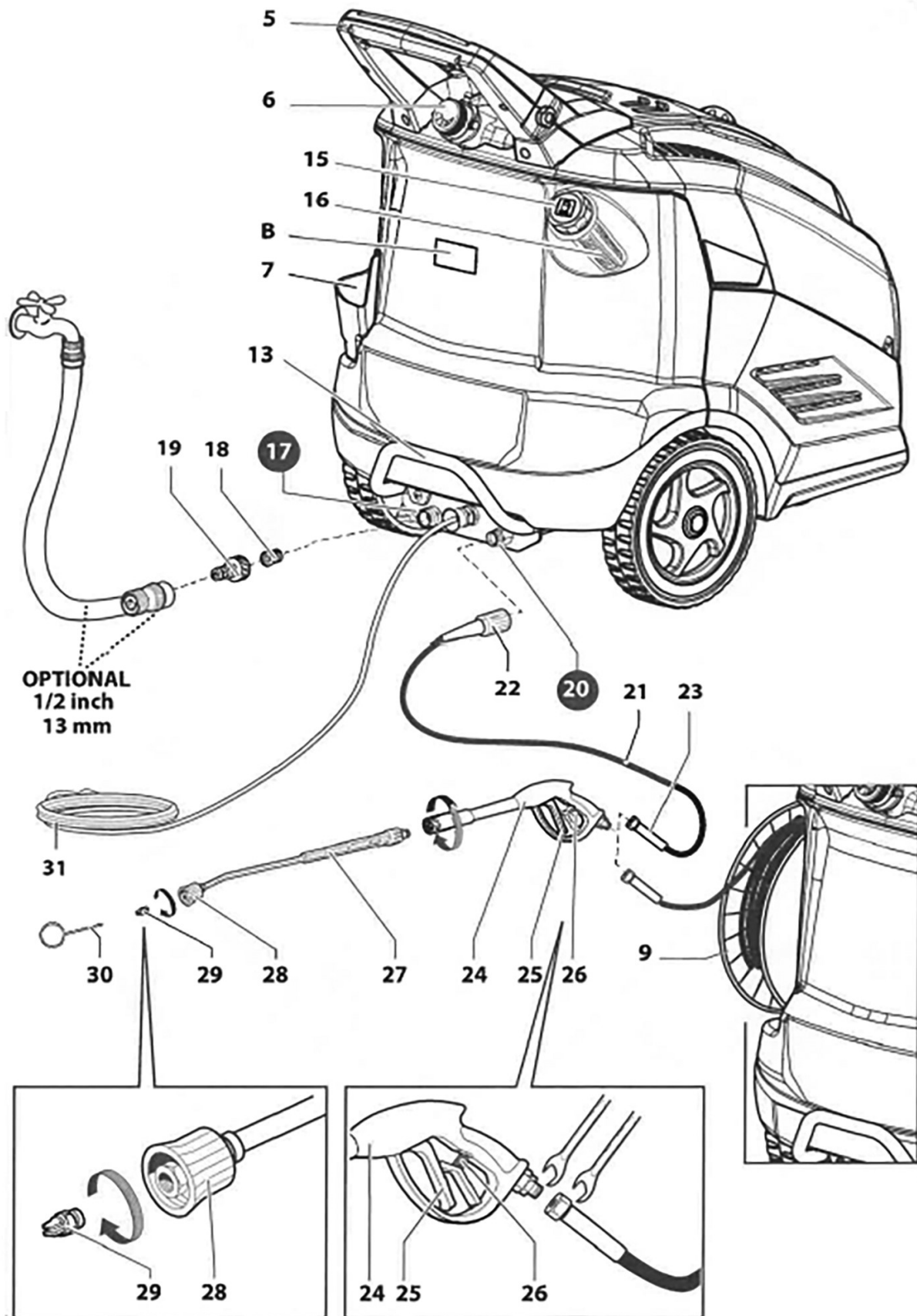


1	Control panel
2	Power switch (On/Off)
3	Temperature adjustment knob
4	Exhaust
5	Handle
6	Detergent adjustment knob
7	Accessories pocket

8	Hose reel ring nut
9	Hose reel
10	Hose reel knob
11	Swivel wheel
12	Swivel wheel brake
13	Lifting point
14	Pressure gauge

**The component parts numbers in the machine overviews Front and Rear will be referred to in the following instructions.**

# OVERVIEW REAR



15	Fuel tank cap
16	Fuel filter
17	Water inlet
18	Water inlet filter
19	Water inlet connector
20	Water outlet
21	High pressure hose
22	Quick-fit connector (side pump)
23	Quick-fit connector (side gun)

24	Water gun
25	Water gun trigger
26	Water gun lever safety stop
27	Lance hose
28	Nozzle holding head
29	High pressure nozzle
30	Nozzle cleaning hole
31	Power cable/plug

- Items 32-38 are shown on later pages in the manual

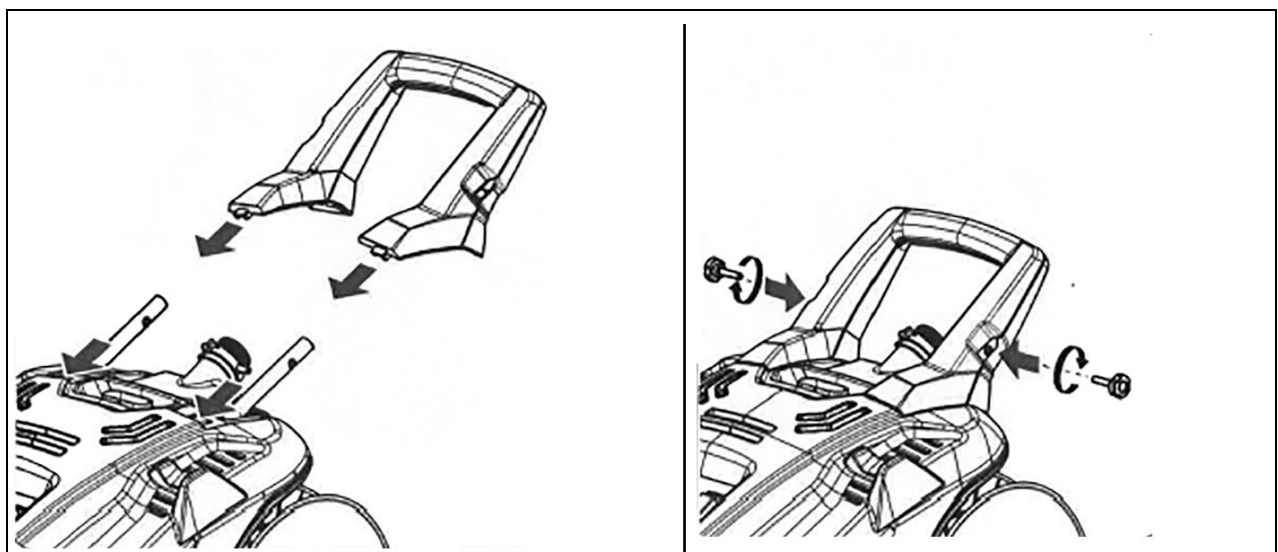
## UNPACKING AND ASSEMBLY

Remove the cardboard box and put two wheels of the machine on the ground to remove the pallet.

The following items should be supplied. If any parts are missing or damaged, please see your CLARKE dealer.

1 x Pressure Washer	1 x Water Inlet Hose Adaptor
1 x Gun Assembly	1 x Hose Assembly
1 x Lance	1 x High Pressure Nozzle

1. Install the handle to the top of the machine using the bolts supplied.
2. Release the forward castor wheel to facilitate movement of the machine.





---

## CONNECTION TO THE WATER SUPPLY

---

The pressure washer must never be connected to the drinking water supply without using a system separator (also known as a backflow preventer).

Always follow the regulations of your local water supplier.



CAUTION: WATER THAT HAS FLOWED THROUGH A SYSTEM SEPARATOR IS CONSIDERED NON-DRINKABLE.

---

Make sure that the hose is at least  $\varnothing$  13mm-1/2 inch and that it is reinforced.

**IMPORTANT:** Only clean or filtered water should be used for intake. The delivery of the water intake tap should be equal to the double of the maximum pump range.

- Minimum delivery rate: 15 L/ min.
- Maximum intake water temperature: 40°C
- Max inlet water pressure: 1 Mpa

Locate the machine as close to the mains water supply as possible.

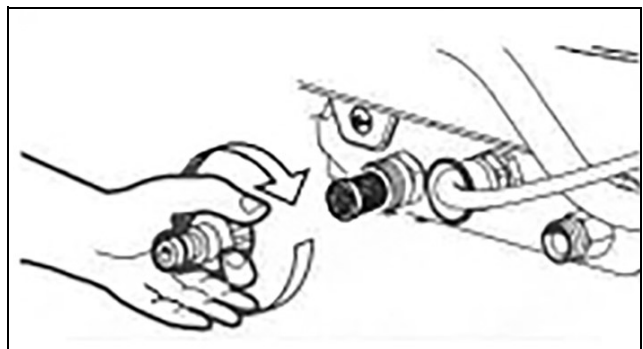
Failure to comply with the above conditions causes serious mechanical damage to the pump and the loss of warranty cover.

---

## PUTTING INTO SERVICE

---

1. Check that the power switch is set to "OFF" and that the water filter is fitted into the pump inlet pipe.
2. Screw the snap connection into place by hand, without the aid of tools.
3. Connect the water supply hose to the snap connection.
  - The hose must have an inside diameter of at least 13 mm (1/2").



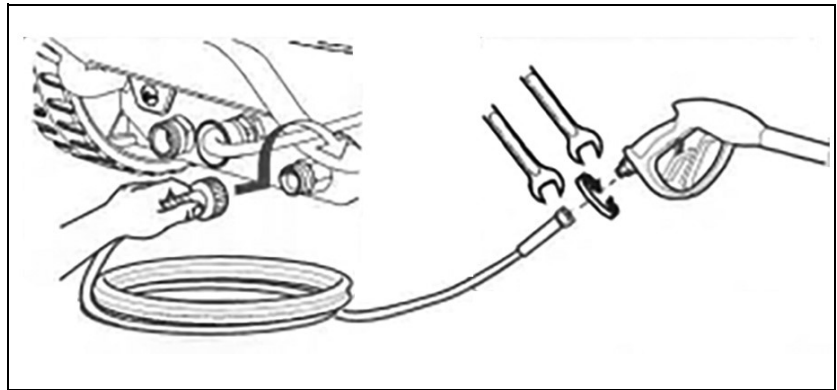
4. Connect the high pressure hose to the pump outlet pipe. Press the high pressure hose coupling fully down and then screw into place by hand without the aid of tools.
5. Unroll the high-pressure hose.

6. Unlock the hose-reel by rotating the ring nut (8) counter-clockwise. Unwind the hose quantity that you need by rotating it in counter-clockwise direction using the knob (10). Lock the device by rotating the ring nut (8) clockwise.

7. Connect the high pressure hose to the gun.

8. Turn the water tap fully on. The water temperature must be below 40°C.

- The machine has to operate with clean water in order to avoid any damage to the machine itself.

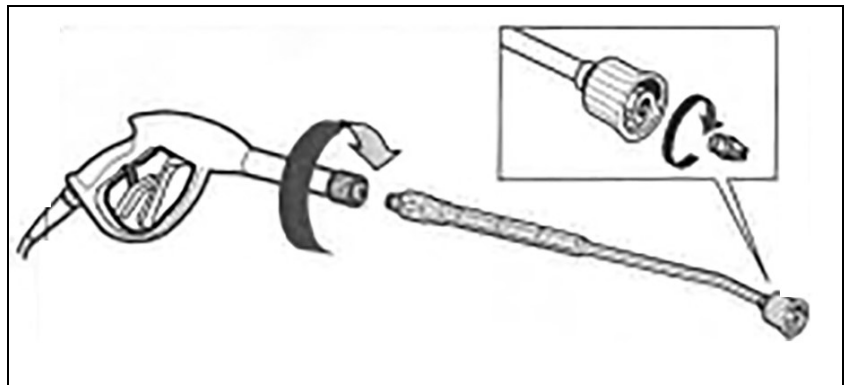


9. Release the gun safety catch and keep the trigger squeezed, allowing the water to flow until all the air has been expelled.

10. Connect the plug to the power socket.

11. Fit the lance to the gun.

12. To start the machine, set the power switch (2) to "ON" and squeeze the gun trigger.



## ADDING FUEL



**WARNING: INCORRECT FUELS MUST NOT BE USED AS THEY MAY PROVE HAZARDOUS. ONLY USE DIESEL FUEL**

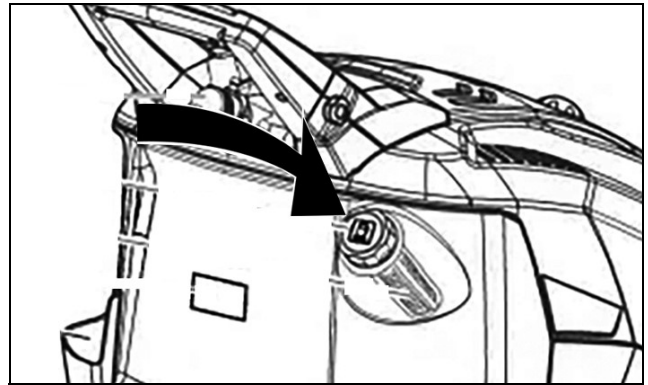
**ALWAYS** refuel in a well-ventilated area, away from sources of ignition.

**NEVER** leave fuel within the reach of children.

Re-fuel carefully to avoid spillages.

1. Remove the diesel filler cap.
2. Fill the tank with diesel fuel only.
  - Minimum 4 litres
  - Maximum 14 litres.
3. Replace the filler cap securely.

Avoid letting the tank become empty when the machine is running in order not to damage the fuel pump.



## FILLING WITH DETERGENT

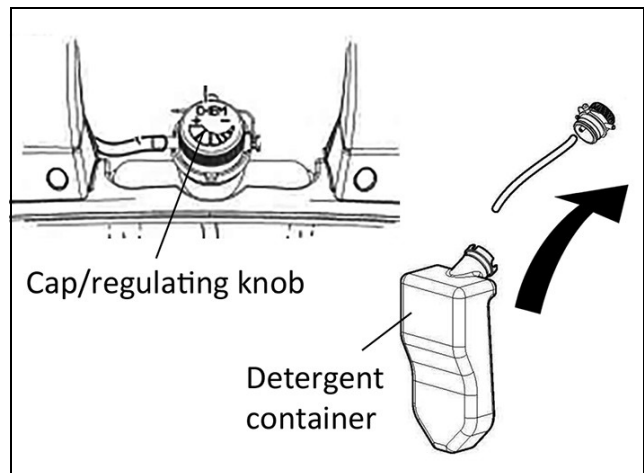
With the detergent container fitted to the machine, pull off the connecting pipe and the filler cap and fill the container. (We suggest using a funnel and keeping it for this purpose).

Use only detergent products suitable for the kind of washing to be carried out.

**WARNING:** Use only liquid detergent free from acid or alkaline chemicals.

We suggest you use CLARKE products which have been chosen for use with power washers. Only use detergents recommended for use with pressure washers such as:

- CLARKE Traffic Film Remover or CLARKE Wash and Wax (available from your dealer), is recommended. This is a powerful 'low foaming' agent for car cleaning, patio cleaning etc.



---

## STARTING THE WASHER

---

**WARNING:** Whenever using the machine, users are urged to hold the gun in the correct position with one hand on the grip and the other on the lance.

### STANDARD OPERATION (HIGH PRESSURE) WITH COLD WATER

1. Check that the temperature adjusting knob is set to off (position "0") and that the nozzle-holding head is not set to detergent supply (see also paragraph "Operation with Detergent").
2. Restart the machine by setting the main switch to "1".

**NOTE:** During this restart phase, the machine will immediately stop operating after the initial peak, as the Total Stop device will take effect.

3. Use the trigger to start operation of the machine and begin cleaning.
  - The pressure value is displayed on the pressure gauge .

### STANDARD OPERATION (HIGH PRESSURE) WITH HOT WATER

1. Check that the nozzle-holding head is not set to detergent supply (see also paragraph "Operation with Detergent").
2. Restart the machine by setting the power switch to "1".

**NOTE:** During this starting-up the machine stops immediately after the starting pickup because the Total Stop device is activated.

3. Rotate the temperature adjusting knob in order to select the required temperature.
4. To operate the machine, thus starting the washing operation; you only need to activate the trigger of the gun.
  - The working pressure is displayed on the pressure gauge.
5. If you wish to change from washing with hot water to washing with cold water, set the temperature adjusting knob to "0".

In case of operation indoors, adequate ventilation and gas venting must be assured.

---

## OPERATION WITH DETERGENT

---



**WARNING: THE USE OF UNSUITABLE CLEANING AGENTS MAY ADVERSELY AFFECT THE SAFETY OF THE MACHINE. DO NOT EXCEED THE CORRECT OPERATING TEMPERATURE FOR THE DETERGENT IN USE.**

---

Only use detergents recommended for use with pressure washers such as:

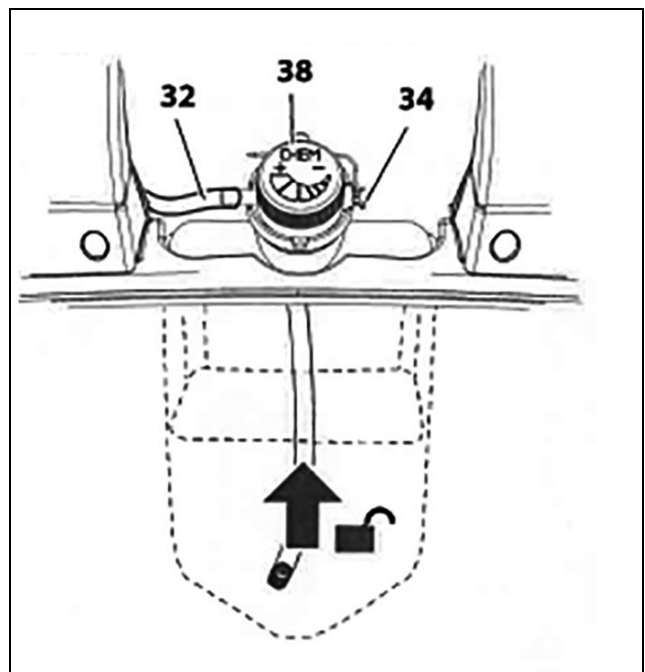
- CLARKE Traffic Film Remover which is a powerful 'low foaming' agent for car cleaning, patio cleaning etc.
  - CLARKE Wash & Wax.
1. Remove the detergent filler cap.
  2. Fill the tank with detergent.
    - Maximum 2.5 litres.
  3. Replace the filler cap securely.
  4. When using detergent, always use the nozzle at low pressure either by widening the jet or standing further from the target.
1. The detergent suction is automatic when the adjusting head of the lance is rotate for low pressure operation as on page 14 (anti-clockwise).

Refer to the label on the detergent for instructions on how to use it.

1. Turn the main switch to "0".

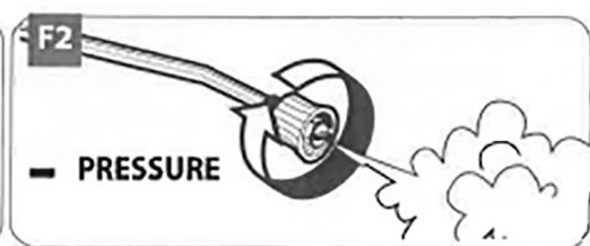
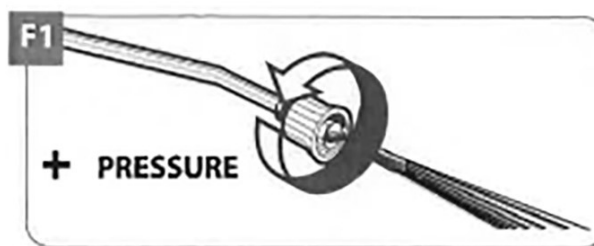
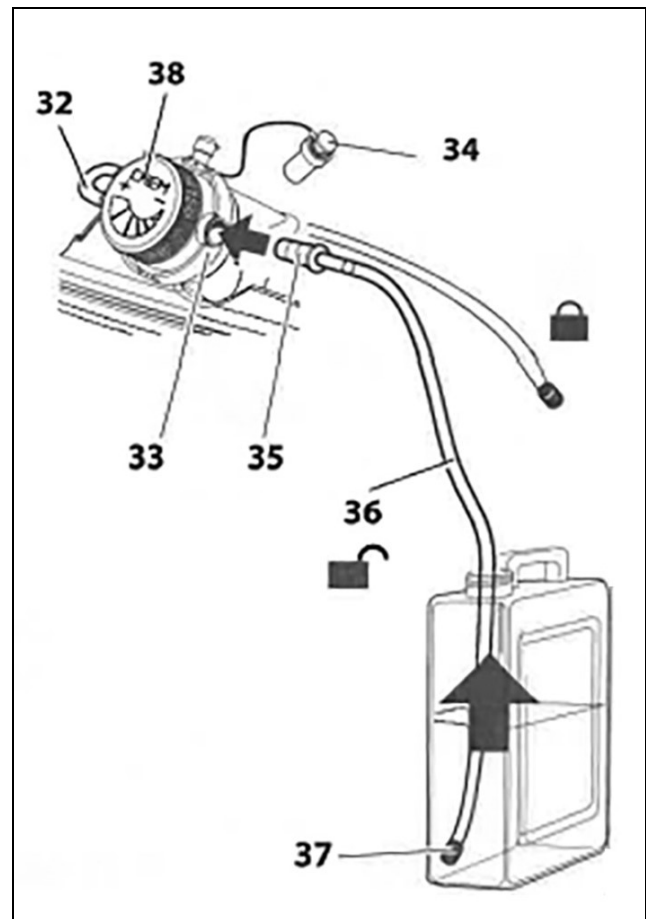
### SUCTION FROM THE HIGH PRESSURE WATER CLEANER TANK

1. Disconnect the hose and take the cap off. Being careful not to spill any of the liquid (we suggest using a funnel and keeping it for this purpose), fill the tank, following the dosage directions given on the detergent pack.
2. Replace the cap and re-connect the hose.



## SUCTION FROM EXTERNAL TANK

1. Remove the cap (34) and insert the fitting (35) of the external detergent tank suctioning hose (36) into the coupling (33).
2. Insert the hose (36) into the external tank containing the detergent at the strength required.
3. Turn the detergent regulating knob (38) clockwise.
1. Operate the nozzle head (28) as shown below and start up the machine again by setting the power switch to or I.
2. Squeeze the trigger (25). When the water is fed through the gun, suction and mixing take place automatically.
3. To resume work at high pressure, stop the machine by setting the power switch (2) to "0" and adjust the nozzle head (28) as shown below. (Detergent is delivered at low pressure).
4. Turn the knob (38) until the amount of product required is delivered.
5. When you have finished work, turn the knob (38) completely anticlockwise and, if you were using an external tank for the detergent, remove the fitting (35) from the coupling (33) and refit the cap (34).



**IMPORTANT;** (The King 250 has an Automatic Stop System which stops the machine during the bypass phase. To start the water cleaner, it is therefore necessary to set the switch to position "1" (ON); after that squeeze the gun trigger. The Automatic Stop System will start the machine and will stop it automatically when the trigger is released. It is advisable to engage the safety lock of the trigger whenever the machine is stopped in order to avoid unintentional starting.

Any automatic starting of the machine without squeezing the trigger is attributable to air bubbles in the water or other similar phenomena which does not imply the existence of any defects in the machine.

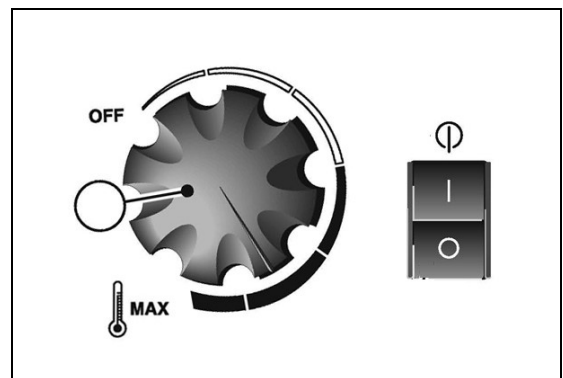
6. Do not leave the machine unattended in standby for more than 5 minutes. Always return the switch into the "0" OFF position.
7. Always check that the coupling of the high pressure hose between the machine and the gun is made correctly and without any leaks.

## WASHING WITH COLD WATER

1. Set the ON/OFF switch to ON.
2. Squeeze the gun trigger.

## WASHING WITH HOT WATER

1. Set the ON/OFF switch to ON.
2. Set the Burner ON/OFF switch to ON.
3. Turn the burner thermostat to the desired temperature setting.
4. Squeeze the gun trigger.



## USE OF THE GUN/LANCE



**WARNING: IN CASE OF OPERATION INDOORS, ADEQUATE VENTILATION AND GAS VENTING MUST BE ASSURED.**

## HOLDING THE LANCE

1. Users must hold the gun in the correct position, with one hand on the grip and the other on the lance as shown.

**NOTE:** Never touch any metal parts of the lance as they will get hot during use.



## GUN SAFETY LOCK

The safety locking lever on the gun is not there to lock the trigger during operation, but to prevent its accidental operation.

1. Lift the locking lever to the position shown to prevent the trigger from being pulled.



2. Fold the locking lever flat to release the trigger lock.



**DO NOT** leave the machine unattended.

If you do not intend to use the machine for more than 5 minutes, set the ON/OFF switch to OFF.

## TO CHANGE THE SPRAY PATTERN (PENCIL JET/FAN SPRAY)

To vary the spray between Pencil Jet and Fan Spray, turn the nozzle counter-clockwise through a half-a-turn (180°).

## ADJUSTING THE PRESSURE

Ways to adjust the pressure include varying the distance you are from the surface being cleaned or adjusting the spray to a wider angle (lowering the pressure).

## SHUTTING DOWN

1. Set the power switch to the OFF position and wait for the water to cool down.
  - In this way you avoid any calcium deposits and overheating of the coil and the boiler which are always dangerous.
2. Turn off the water supply and unplug the machine from the power supply.
  - The trigger can be left on the locked off position.
3. Squeeze the trigger on the gun assembly to discharge any pressure in the hose.
4. Turn off and disconnect the water supply hose and allow it to drain fully.
5. Disconnect the high pressure hose and allow it to drain fully.



---

## CARE AND MAINTENANCE

---



**WARNING: DISCONNECT THE MACHINE FROM THE POWER SOURCE DURING CLEANING OR MAINTENANCE.**

**WARNING: DO NOT SPRAY THE MACHINE WITH WATER AND DO NOT USE DETERGENTS OR AGGRESSIVE SOLVENTS AS THEY COULD DAMAGE THE MACHINE.**

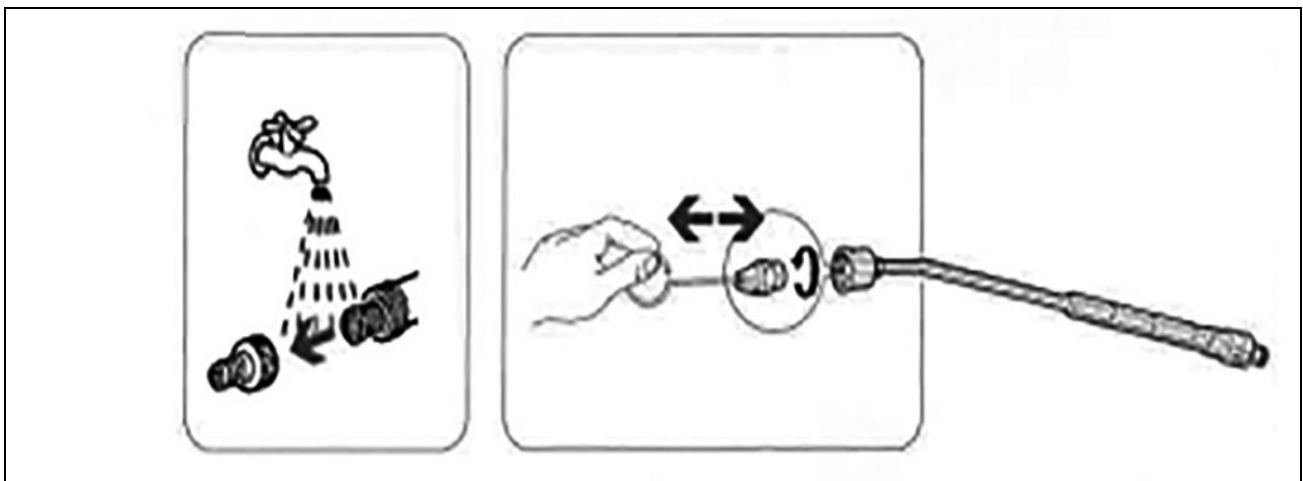
---

1. Clean the exterior part of the machine with a dry cloth.

### CLEANING THE WATER INLET FILTER AND NOZZLE

To ensure the pump gives good service it is very important to check and clean the water inlet filter frequently.

A blockage in the nozzle may prevent the machine from operating correctly so it must be kept clean.

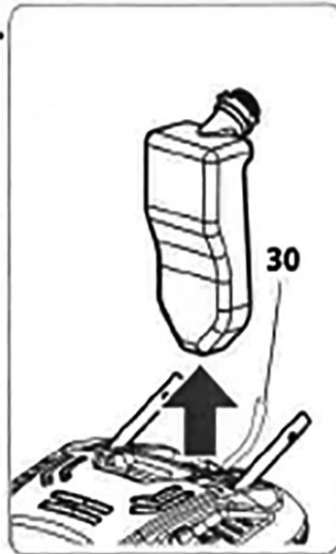


1. Switch off the machine.
2. Remove the lance.
3. Clean the nozzle with the pin provided.
4. Rinse the lance in running water.
5. Remove and clean the detergent container including the pick-up pipe.

1.



2.



3.



## TOPPING UP OIL IN THE PUMP

If topping up oil in the pump a SAE-20-W40 mineral oil should be used.

## CONSUMABLES

A range of suitable hoses, shampoo and traffic film remover are available from your CLARKE dealer.

# MAINTENANCE SCHEDULE

Frequency	Maintenance task	
Every time the machine is used	<p>Check the power cable, the high pressure hose, connectors, gun and lance hose.</p> <p>Should any of these look damaged, DO NOT use the machine but contact your CLARKE dealer.</p>	
Once a week	<p>Check the water inlet filter (18) and clean it if necessary. Unscrew the joint and remove the filter.</p> <p>Running water or compressed air is generally all that is needed to clean the filter.</p> <p>In the most difficult cases use a limescale remover or replace it, contacting your CLARKE dealer to replace the part.</p> <p>Install the filter again, following the above steps in reverse order.</p>	
Once a month	<p>Clean the nozzle.</p> <p>To clean the nozzle, it is generally sufficient to insert the pin supplied into the nozzle's hole. If no appreciable results are obtained, contact your CLARKE dealer to replace the part. The nozzle can be replaced using a spanner (not supplied).</p>	
<p>Supplementary maintenance should only be carried out by your CLARKE dealer to replace any parts, following the table below (guideline only):</p>		
Every 100 hours	<ul style="list-style-type: none"> <li>• Check the pump's hydraulic circuit (water).</li> <li>• Check the pump is firmly secured.</li> <li>• Adjust the electrodes.</li> <li>• Check/top up the pump's oil level.</li> </ul>	<ul style="list-style-type: none"> <li>• Clean the fuel nozzle.</li> <li>• Check/replace the fuel filter.</li> <li>• Check/replace the water filter.</li> </ul>
Every 300 hours	<ul style="list-style-type: none"> <li>• Change the pump oil.</li> <li>• Replace the electrodes.</li> <li>• Replace the fuel nozzle.</li> <li>• Check the pump delivery /suction valves.</li> <li>• Check the tightness of pump screws.</li> </ul>	<ul style="list-style-type: none"> <li>• Check the pump's adjustment valve.</li> <li>• Clean the boiler.</li> <li>• Remove any lime scale on the heating element.</li> <li>• Check the safety devices.</li> </ul>

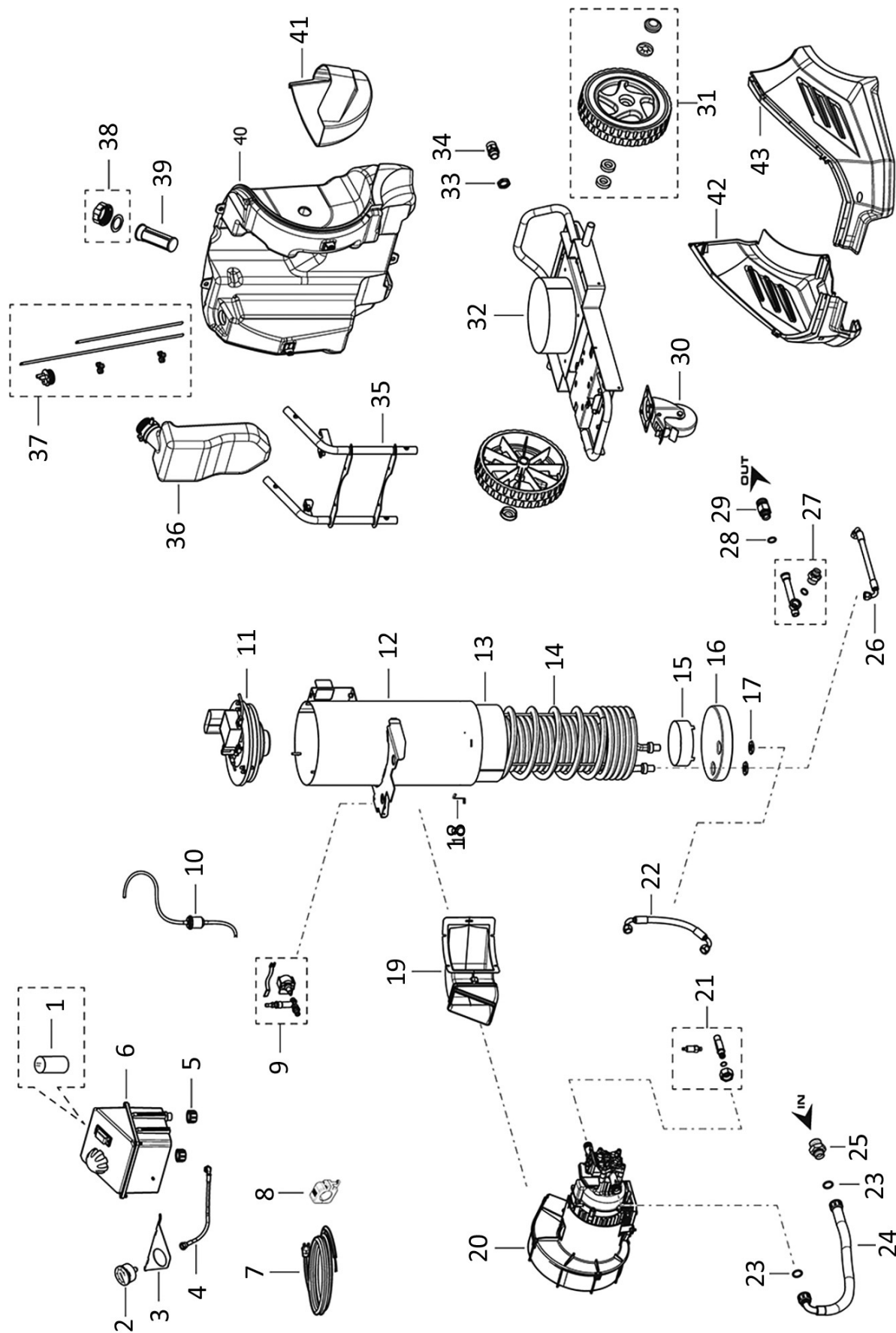
## TROUBLESHOOTING

<b>FAULT</b>	<b>CAUSE</b>	<b>SOLUTION</b>
When the main switch is turned on the machine does not start	Plug not properly connected. Plug fuses are burnt out. The pump has cut out.	Carefully check the plug and the electric cable. Check them and replace them. Turn the switch to ON while keeping the gun lever pressed. If the problem persists Contact CLARKE service.
The machine starts but no water comes out.	Pump, hoses or accessories frozen. No water supply Water filter fouled. Nozzle fouled.	Allow pump and hose to thaw Connect the machine to the water supply and turn on the tap. Remove and clean the filter See MAINTENANCE Remove the lance from the gun and clean the nozzle with the pin provided.
The motor stops suddenly or after a period of running.	The motor-protecting overload switch has been tripped	Allow the motor to cool for a few minutes. If the problem persists Contact CLARKE service.
When the lance is turned on, pressure decreases and increases	The nozzle is either clogged or deformed.	Either clean it or replace it.
	Either boiler coil or lance are clogged with limescale.	Contact CLARKE service.
The pump does not reach the fixed pressure	The pump sucks air with water Suction filter fouled  Pressure regulator valve on minimum setting Lance nozzle worn Suction or delivery valves fouled or worn	Check that the delivery rate is at least 12 L/min. Remove and clean out the filter. Increase pressure by turning the hand grip Replace the lance Contact CLARKE service.

Irregular pressure fluctuations	Lance nozzle fouled Suction filter fouled.  Air bubbles in intake water The suction and/or delivery valves are worn out. Pressure regulator gaskets worn.	Remove the lance from the gun and clean the nozzle with the pin provided. Supply a better stream of water. Remove and clean out the filter.  Contact CLARKE service.
Water leakage	Leaks from hose reel.  Leaks from inlet coupling.  Leaks from pump.	Tighten the couplings. If problem persists contact CLARKE service. Make sure the coupling has been fitted correctly (see INSTALLATION) Contact CLARKE service.
Noisy operation	Suction filter fouled Inlet water temperature too high. Suction or delivery valve fouled or worn. Bearing worn.	Remove and clean filter (See maintenance) Reduce the water temperature to below 40°C Contact CLARKE service.
Insufficient detergent suction	No detergent in the tank. Lance hand-grip on high pressure setting (if present). Transparent suction pipe damaged or disconnected	Fill the detergent tank. Move it to the Low Pressure setting by rotating the head nozzle Reconnect the pipe. If problem persists contact CLARKE service.
Water in the fuel.	The O-ring casing is worn out. The seals are completely worn out.	Contact CLARKE service.
When turning on the burner switch the boiler does not start	No fuel. Fuel filter is clogged. Fuel pump is blocked or burned out. Damaged thermostat Ignition spark is inadequate or missing Electrode gap is incorrect	Check the level in the tank and that the rigid suction pipe is clean. Replace the line filter. Contact CLARKE service.
Water is not hot enough	Poor boiler performance.	Contact CLARKE service.
	Boiler coil clogged with limescale.	

**For all other problems contact the CLARKE service department.**

# COMPONENT PARTS (OVERVIEW)

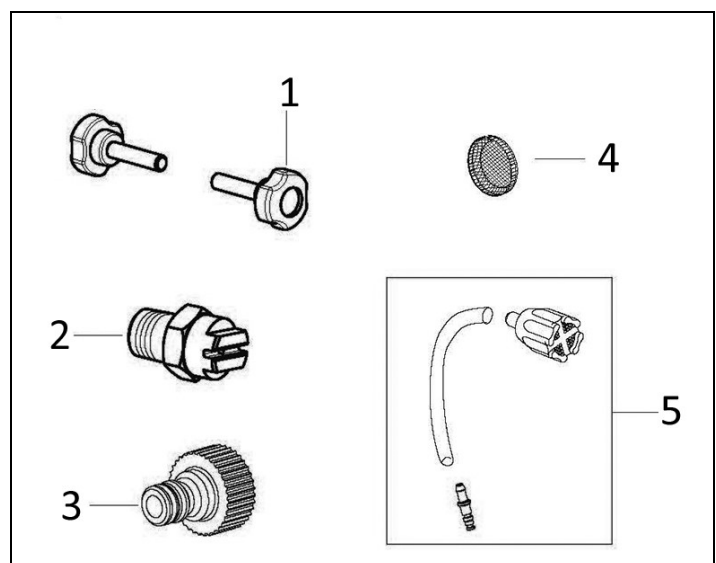


1	Capacitor
2	Manometer
3	Mano-stat support
4	Gauge hose
5	Knob
6	Complete control panel
7	Cable
8	Wiring harness
9	Diesel pump kit
10	Diesel filter
11	Boiler cover assembly
12	External boiler body
13	Internal boiler body
14	Coil D200
15	SS Coil cover
16	Resistant panel
17	Brass ferule
18	Boiler mounting bracket
19	Duct
20	Pump motor kit
21	Joint with safety valve
22	High pressure hose

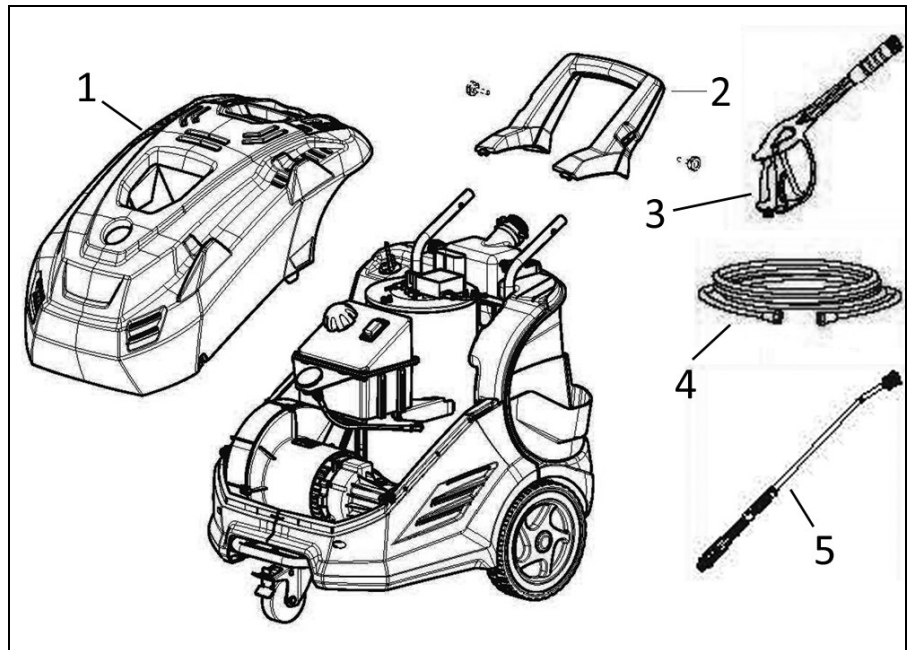
23	Adapter
24	Low pressure hose
25	Coupling
26	Tube 90deg
27	Outlet joint
28	Copper washer
29	Connector
30	Wheel
31	Wheel kit
32	Complete frame
33	Jam nut for cable holder
34	Cable holder
35	Handlebar
36	Detergent tank
37	Diesel pickup kit
38	Tank cap with seal
39	Diesel filter
40	Diesel Tank
41	Accessories holder
42	Lower right cover
43	Lower left cover

## COMPONENT PARTS (SUB ASSEMBLIES)

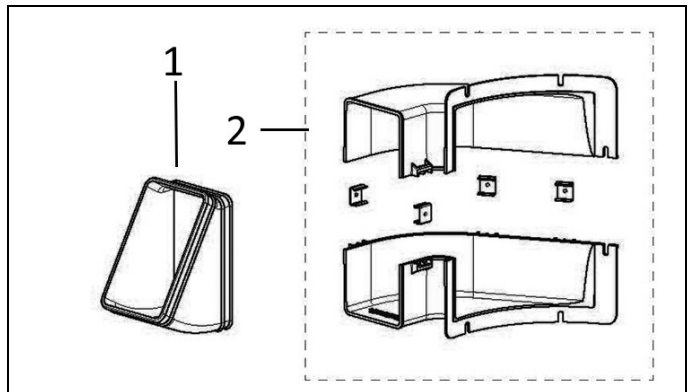
1. Lobe knob
2. High pressure nozzle
3. Quick coupling inlet connector
4. Inox filter suction connector
5. External detergent kit



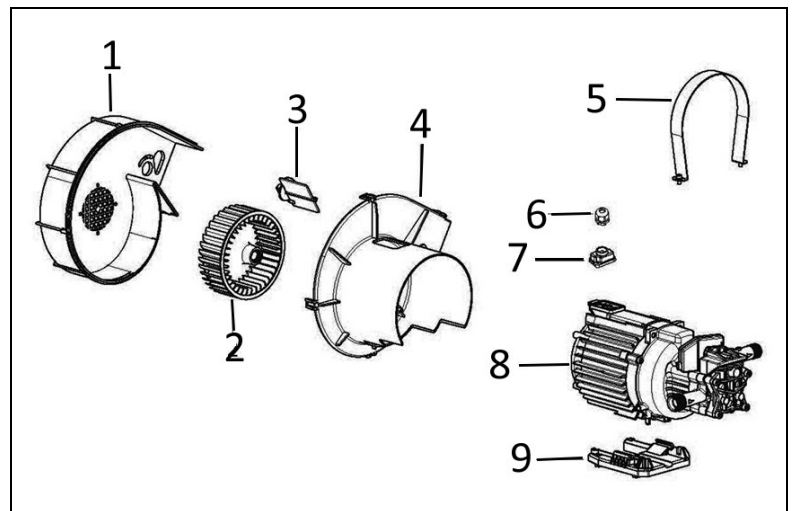
1. Red upper cover
2. Complete handle
3. Gun assembly
4. Hose
5. Lance



1. Sleeve for boiler ducting
2. Boiler duct kit

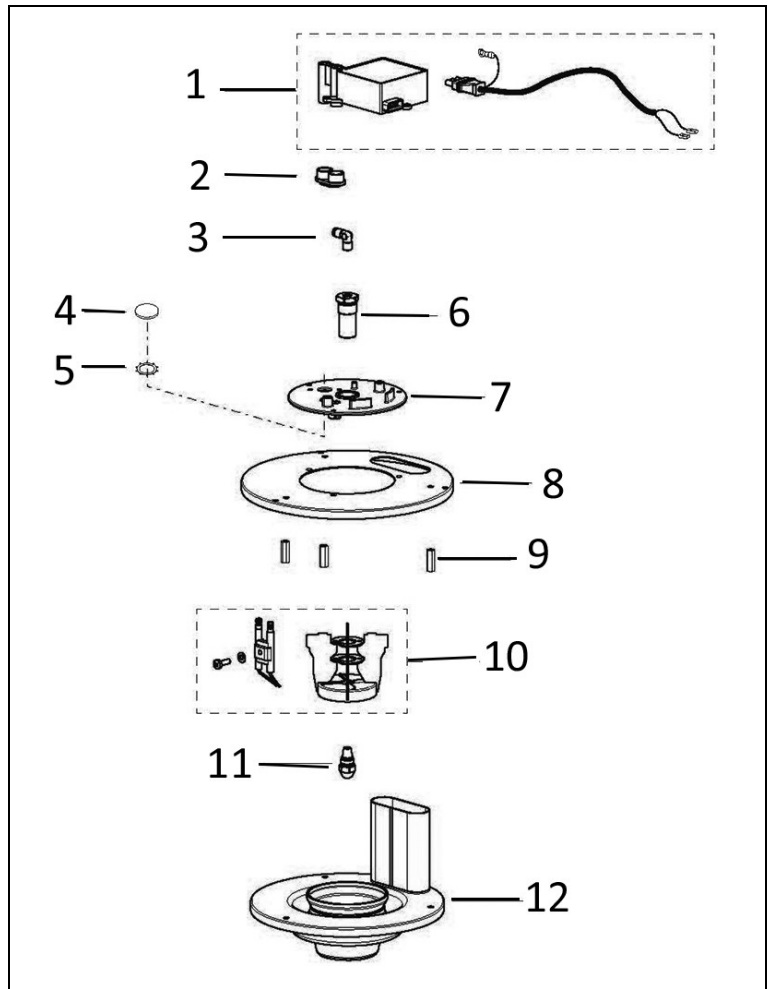


1. Box cover for pump
2. Fan
3. Fly valve
4. Motor duct
5. Fixing strip
6. Cable gland
7. Box cover for motor
8. Motor pump brass double
9. Pump support

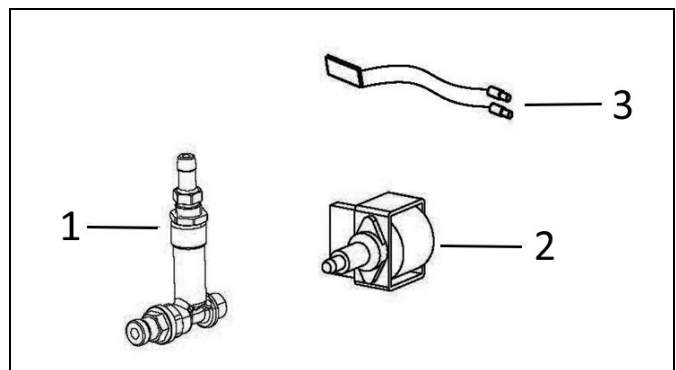




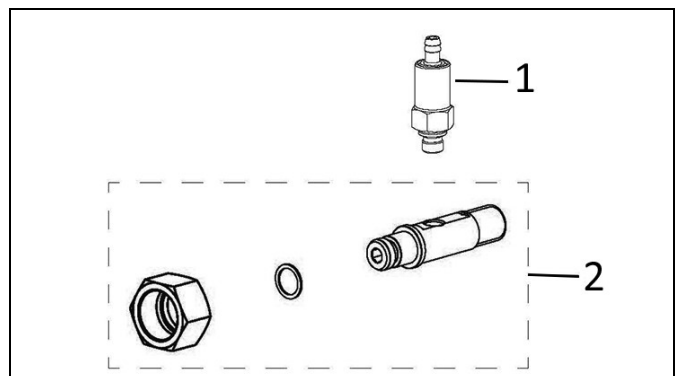
1. Transformer and cable
2. Rubber seal for transformer
3. Cone connection for fuel hose
4. Plug
5. Outer circlip
6. Nozzle holder pin
7. Burner flange
8. Boiler upper cover
9. Spacer
10. Deflector with electrode
11. Gas oil nozzle filter
12. Combustion chamber cover



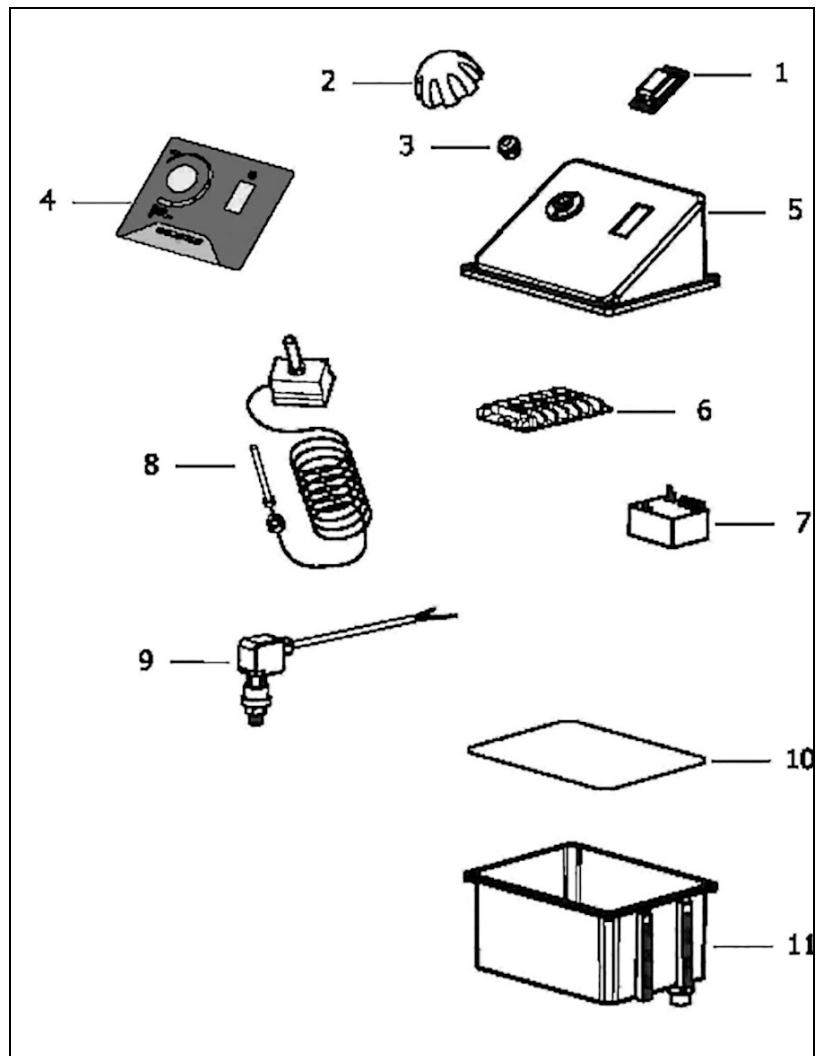
1. Adjusting valve assembly
2. Pump
3. Thermal cutout



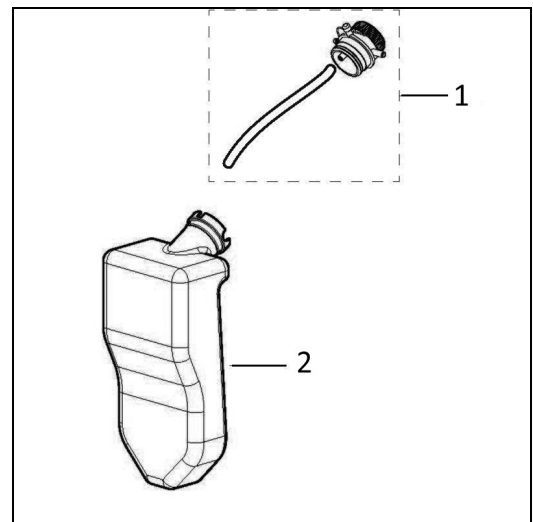
1. Maximum pressure valve
2. Kit 291 Union pump/boiler



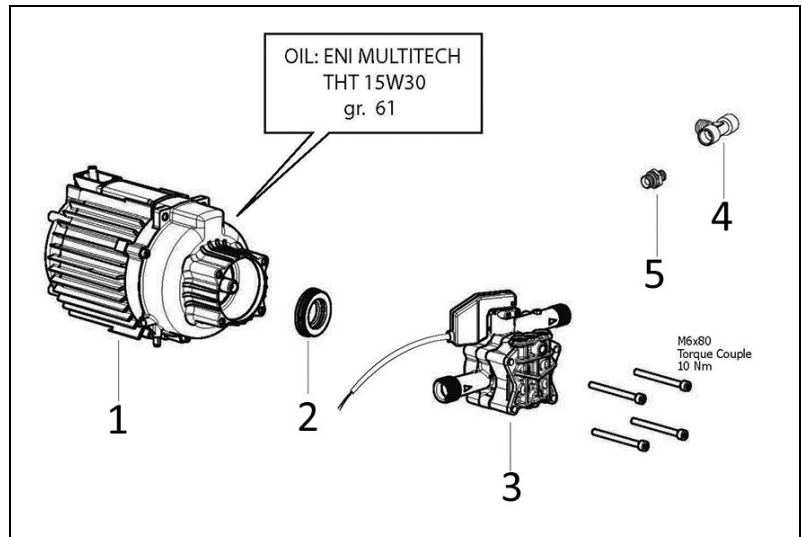
1. Thermal switch
2. Thermostat control knob
3. Sealing bush
4. Control panel sticker
5. Control panel cover
6. Terminal board PA32/6
7. Delayer kit
8. Thermostat 30/90
9. Pressure switch PS2
10. O-ring 2.62 x 215,57
11. Control panel box



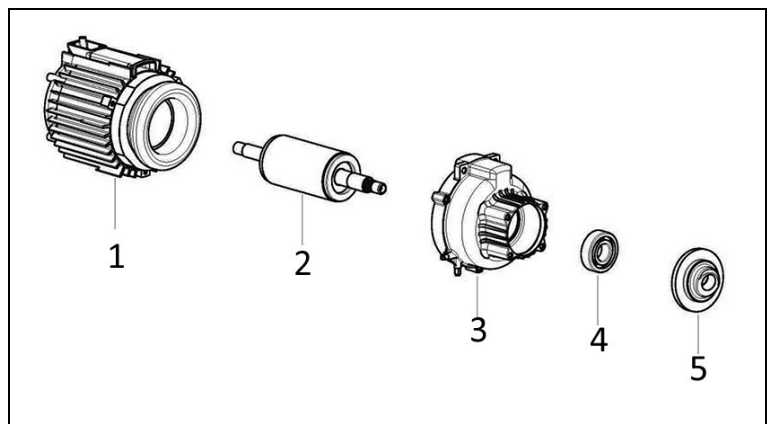
1. Detergent cap with adjuster
2. Detergent tank



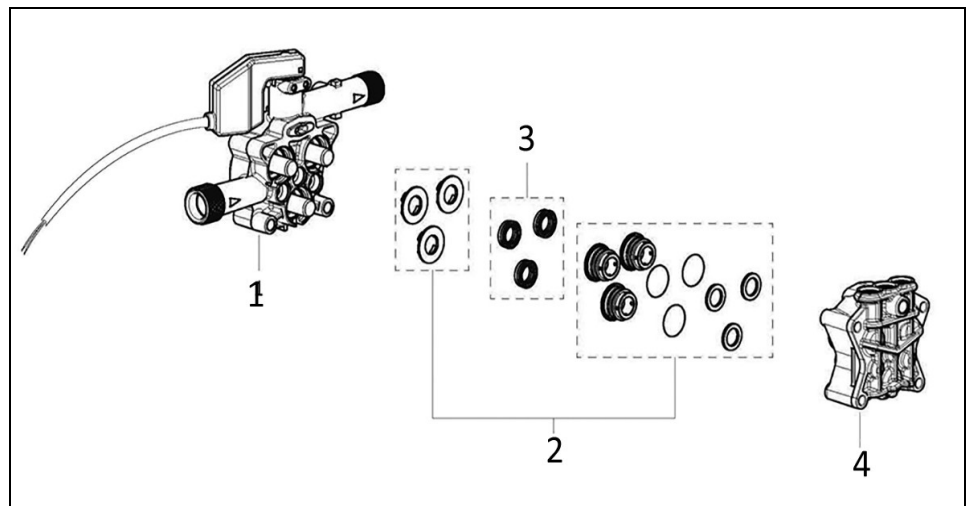
1. Motor assembly with wobble plate
2. Thrust bearing
3. Body guide + brass head double seal assembly
4. T-connector
5. Nipple



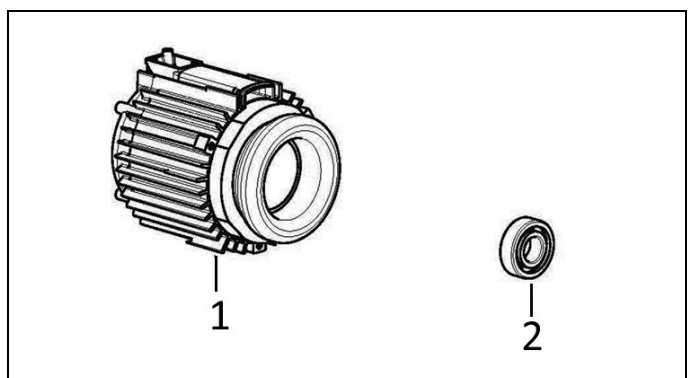
1. Housing
2. Rotor
3. Motor mounting
4. Special bearing 7304B
5. Inclined plate



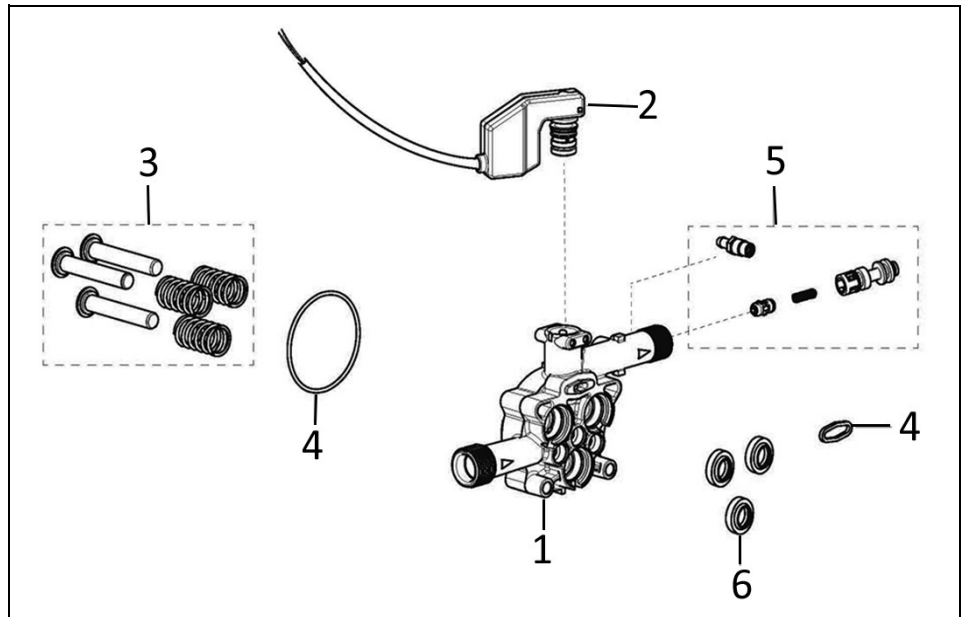
1. Piston body guide
2. Spacer kit double seal
3. Kit water seal
4. Brass head PT03 d/seal-pressure gauge



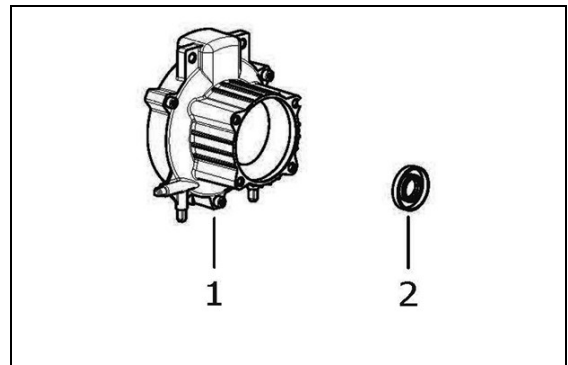
1. Motor housing
2. Radial bearing



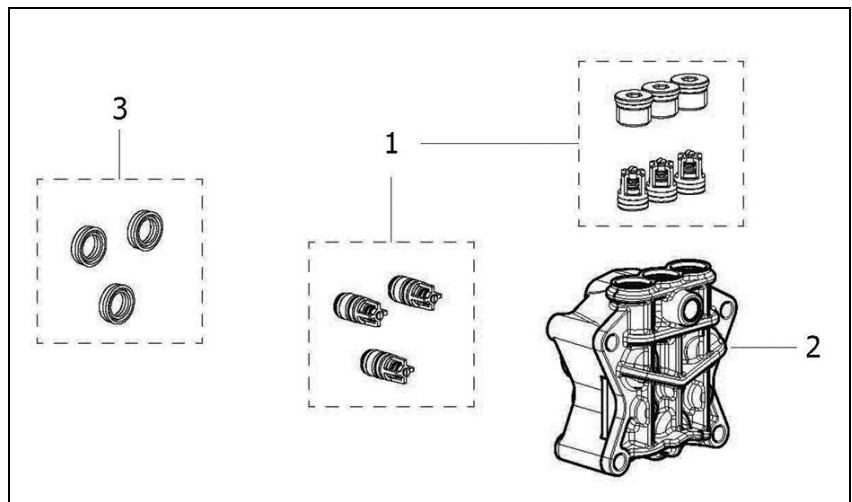
1. Piston body guide with suction
2. Valve assembly
3. Kit 3 pistons
4. O-ring kit for double seal
5. Repair kit
6. Kit oil seal rings



1. Motor front flange
2. Oil seal



1. Kit for suction/delivery valve
2. Brass head worked double seal for pressure gauge
3. Water seal Kit



---

## PRODUCT SPECIFICATIONS

---

Model Number	King 250
Part Number	7320179
Voltage	230 V / 50 Hz / 1 Phase
Motor Input Power	3000 W
Motor Input Current	13 A
Duty Cycle	S1 (continuous)
Ingress protection	IPX5
Max Inlet Water Pressure	10 Bar (10MPa)
Working pressure	145-160 Bar (14MPa)
Maximum output pressure	150 Bar (15MPa)
Maximum output flow rate	9.5 Litres / min
Maximum output temperature	90°C
Maximum input temperature	40°C
Fuel consumption	3 Lt/hr
Fuel tank capacity	14 Litre
Detergent capacity	3.5 Litre
Hose length	8 M
Sound power level (L <sub>WA</sub> )	83 dB
Guaranteed sound power level (L <sub>WA</sub> )	102 dB
Vibration	1.73 m/s <sup>2</sup>
Dimensions (D x W x H)	800 x 580 x 850 mm
Cable length	6 M
Weight	60 kg



### DECLARATION OF CONFORMITY

This is an important document and should be retained.

**We hereby declare that this product(s) complies with the following legislation: The following standards have been applied to the product(s):**

- Noise Emission in the Environment by Equipment for use Outdoors Regulations 2001* EN 60335-1:2012+A11:2014+A13:2017+A1:2019+A14:2019+A2:2019+A15:2021,
- The Electromagnetic Compatibility Regulations 2016* EN 61000-3-3:2013+A1:2019+A2:2021+A2/AC:2022, EN IEC 61000-3-2:2019+A1:2021,
- The Supply of Machinery (Safety) Regulations 2008* EN 55014-1:2017+A11:2020, EN IEC 55014-1:2021, EN IEC 55014-2:2021, ISO 11203:2010,
- The Restriction of the Use of Certain Hazardous Substances in Electrical and Electronic Equipment Regulations 2012* EN 50366:2003+A1:2006, IEC 60335-2-79:2021, IEC 62321-3-1:2013, EN 60335-2-79:2012, IEC 60335-1:2012, EN 60335-1:2012, EN 55014-2:2015, EN 62233:2008, ISO 3744:2010

The technical documentation required to demonstrate that the product(s) meet(s) the requirement(s) of the aforementioned legislation has been compiled and is available for inspection by the relevant enforcement authorities.

The UKCA mark was first applied in: 2024

<b>Manufacturer:</b>	Clarke International Ltd, Hemnall Street, Epping, Essex, CM16 4LG, United Kingdom	<b>Notified Body:</b>	N/A
<b>Product Description:</b>	Pressure Washer	<b>Assessment Procedure:</b>	Annex V of above noise legislation
<b>Model Number(s):</b>	KING 250	<b>Measured LWA:</b>	82.9 dB
<b>Serial/Batch Number:</b>	Refer to product/packaging label	<b>Guaranteed LWA:</b>	85 dB
<b>Document Holder:</b>	Alan Pond	<b>Signed:</b>	 J.A Clarke Director
<b>Date of Issue:</b>	23/07/2024		

KING 250 UKCA Clarke DOC 072324

Page 1 of 1

# CE

# Clarke<sup>®</sup> INTERNATIONAL

## DECLARATION OF CONFORMITY


This is an important document and should be retained.

**We hereby declare that this product(s) complies with the following legislation: The following standards have been applied to the product(s):**

2000/14/EC	Outdoor Noise Directive	EN 60335-1:2012+A11:2014+A13:2017+A1:2019+A14:2019+A2:2019+A15:2021,
2014/30/EU	Electromagnetic Compatibility Directive	EN 61000-3-3:2013+A1:2019+A2:2021+A2/AC:2022, EN IEC 61000-3-2:2019+A1:2021,
2006/42/EC	Machinery Directive	EN 55014-1:2017+A11:2020, EN IEC 55014-1:2021, EN IEC 55014-2:2021, ISO 11203:2010,
2011/65/EU	Restriction of Hazardous Substances (RoHS) Directive	EN 50366:2003+A1:2006, IEC 60335-2-79:2021, IEC 62321-3-1:2013, EN 60335-2-79:2012, IEC 60335-1:2020, EN 60335-1:2012, EN 55014-2:2015, EN 62233:2008, ISO 3744:2010

The technical documentation required to demonstrate that the product(s) meet(s) the requirement(s) of the aforementioned legislation has been compiled and is available for inspection by the relevant enforcement authorities.

**The CE mark was first applied in: 2024**

<b>Manufacturer:</b>	Clarke International Ltd, Fitzwilliam Hall, Fitzwilliam Place, Dublin 2, Republic of Ireland	<b>Notified Body:</b>	N/A
<b>Product Description:</b>	Pressure Washer	<b>Assessment Procedure:</b>	Annex V of above noise legislation
<b>Model Number(s):</b>	KING 250	<b>Measured LWA:</b>	82.9 dB
<b>Serial/Batch Number:</b>	Refer to product/packaging label	<b>Guaranteed LWA:</b>	85 dB
<b>Document Holder:</b>	Alan Pond	<b>Signed:</b>	 J.A Clarke Director
<b>Date of Issue:</b>	23/07/2024		

KING 250 CE Clarke DOC 072324

Page 1 of 1

# A SELECTION FROM THE VAST RANGE OF

# Clarke®

## QUALITY PRODUCTS



**AIR COMPRESSORS**  
From DIY to industrial, Plus air tools, spray guns and accessories.

**GENERATORS**  
Prime duty or emergency standby for business, home and leisure.

**POWER WASHERS**  
Hot and cold, electric and engine driven - we have what you need

**WELDERS**  
Mig, Arc, Tig and Spot. From DIY to auto/industrial.

**METALWORKING**  
Drills, grinders and saws for DIY and professional use.

**WOODWORKING**  
Saws, sanders, lathes, mortisers and dust extraction.

**HYDRAULICS**  
Cranes, body repair kits, transmission jacks for all types of workshop use.

**WATER PUMPS**  
Submersible, electric and engine driven for DIY, agriculture and industry.

**POWERTOOLS**  
Angle grinders, cordless drill sets, saws and sanders.

**STARTERS/CHARGERS**  
All sizes for car and commercial use.



## PARTS & SERVICE: 0208 988 7400

**Parts Enquiries**  
[Parts@clarkeinternational.com](mailto:Parts@clarkeinternational.com)

**Servicing & Technical Enquiries**  
[Service@clarkeinternational.com](mailto:Service@clarkeinternational.com)

SALES: UK 01992 565333 or Export 00 44 (0)1992 565335

**Clarke® INTERNATIONAL** Hemnall Street, Epping, Essex CM16 4LG  
[www.clarkeinternational.com](http://www.clarkeinternational.com)